

KRANIO-MAXILLOFAZIALE CHIRURGIE
CRANIO-MAXILLO-FACIAL SURGERY
CHIRURGIE DU CRANE ET MAXILLO-FACIALE
CIRUGIA CRANEO-MAXILOFACIAL
CHIRURGIA CRANIO-MACILLO-FACCIALE





34.0070
19 cm



34.4020
40x12 mm



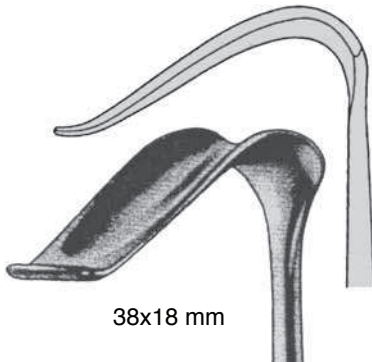
34.4022
55x14 mm



DOCKHORN
20 cm



BÜCHS
34.4030 20,5 cm



38x18 mm



links
left
à gauche
izquierdo
sinistra

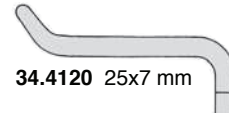
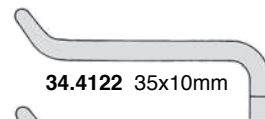
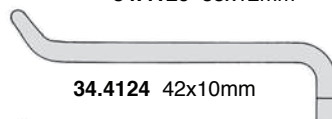
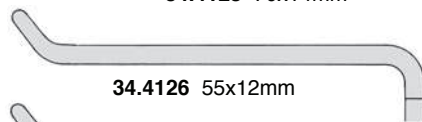
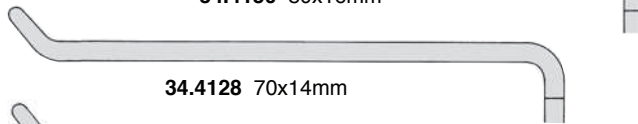
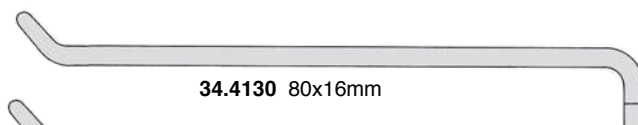
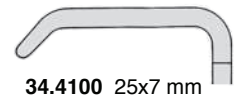
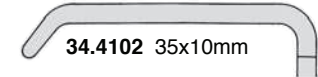
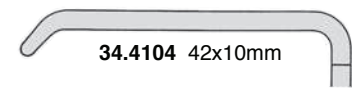
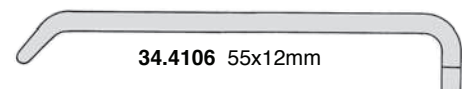
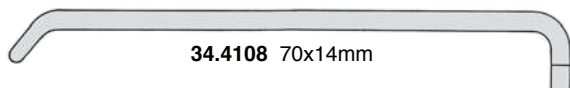
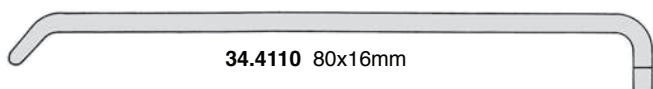


rechts
right
à droite
derecho
destra

Zygoma-Wundhaken
 Zygomatic Retractor
 Ecarteur cygomatique
 Separador cigomático
 Divaricatore per zigoma

STEINHÄUSER
34.4040 24,5 cm

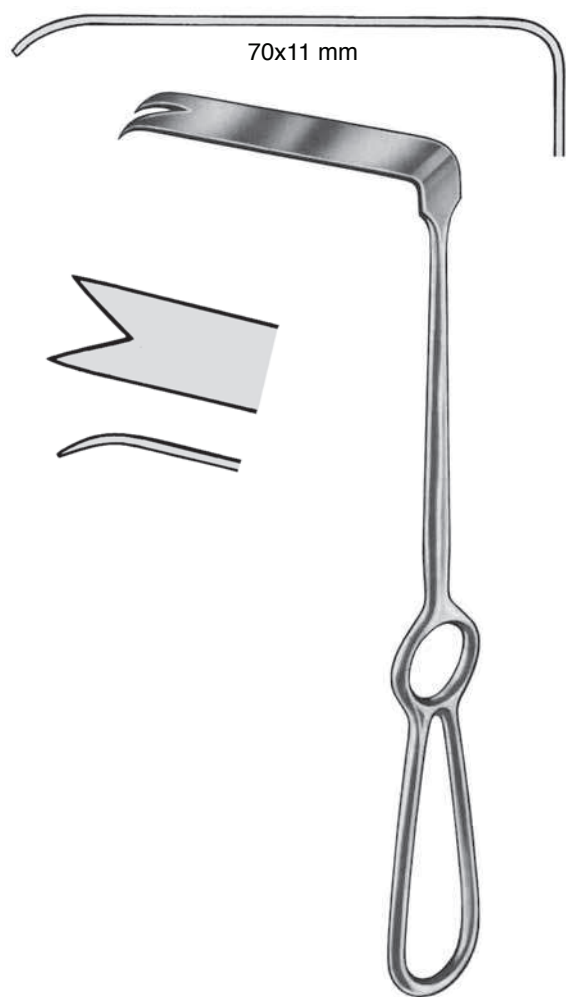
STEINHÄUSER
34.4042 24,5 cm



OBWEGESER
34.4100-34.4110
22 cm

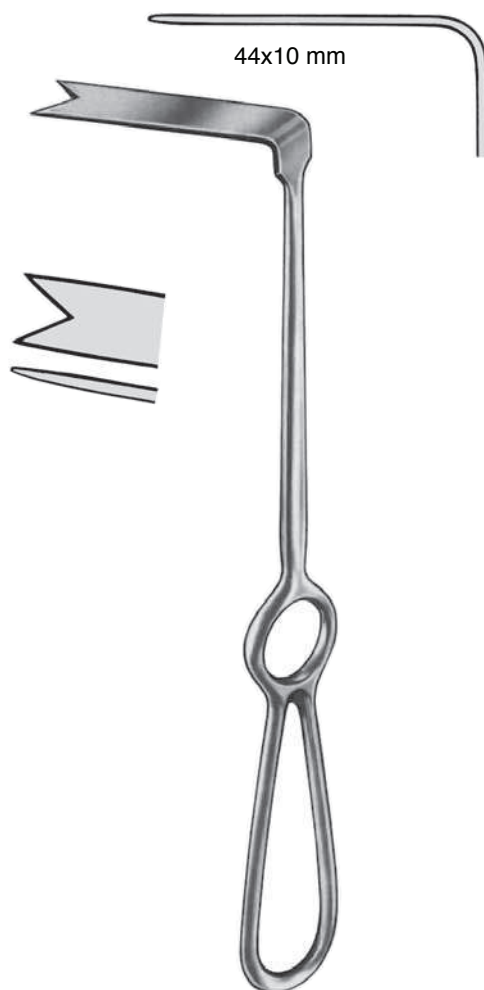


OBWEGESER
34.4120-34.4130
22 cm



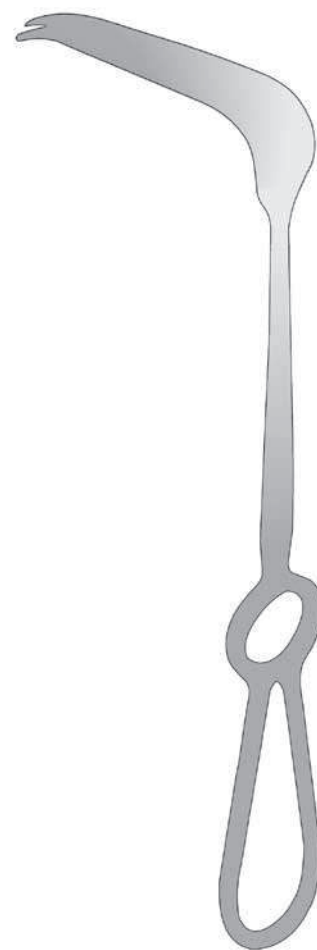
70x11 mm

OBWEGESER
34.4140 22 cm



44x10 mm

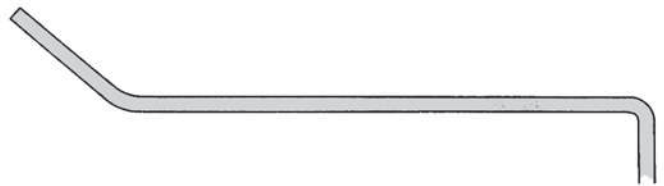
OBWEGESER
34.4145 22 cm



OBWEGESER
22 cm
34.3146
11x15x70 mm
34.4148
12x22x70 mm



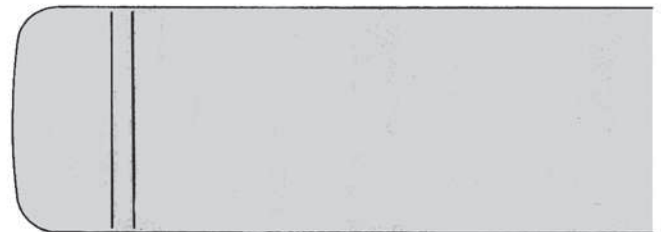
RAMUS
16 cm



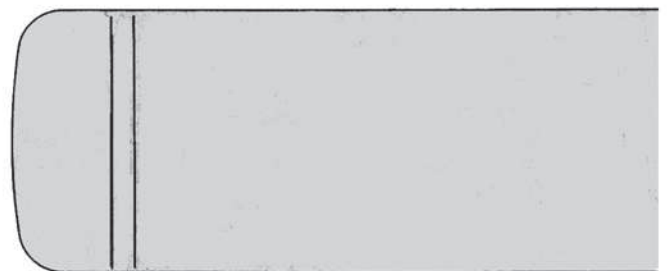
34.4150
20 mm



34.4152
25 mm



34.4154
30 mm



34.4156
35 mm

Kinnhalter
Chin Retractor
Fixe-menton
Gancho de mentón
Guancio per mento

Progenierinnen
Channel Retractors
Ecarteurs mandibulaires
Separadores mandibulares
Separatori mandibolari



OBWEGESER
34.4160
15 cm



OBWEGESER
34.4170 8 mm
34.4172 10 mm
16 cm



BAUER
34.4200

21 cm
26 / 16 mm
rechts
right
à droite
derecha
destra

BAUER
34.4202

21 cm
26 / 16 mm
links
left
à gauche
izquierda
sinistra

BAUER
34.4205

21 cm
26 / 16 mm
rechts
right
à droite
derecha
destra

BAUER
34.4207

21 cm
26 / 16 mm
links
left
à gauche
izquierda
sinistra

mit Kaltlichtaufsatz / with F.O. illumination /
avec support lumière froide /
con portador de luz fria / con luce fredda

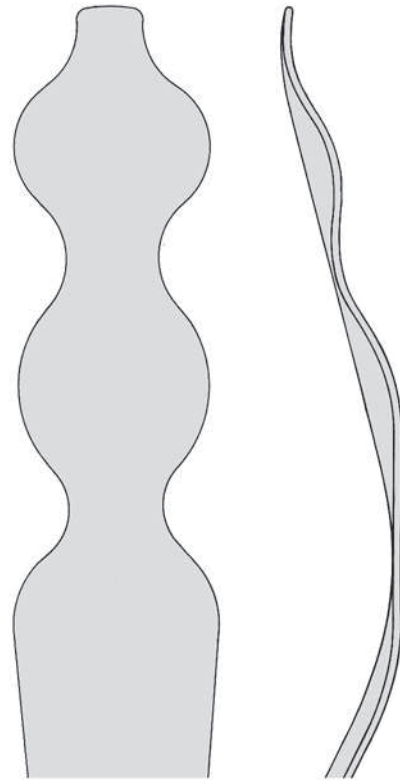


INTRA ORAL
34.4220
24 cm
25 mm



INTRA ORAL
34.4225
24 cm
25 mm

mit Kaltlichtaufsatz
with F.O. illumination
avec support lumière froide
con portador de luz fria
con illuminazione alogena

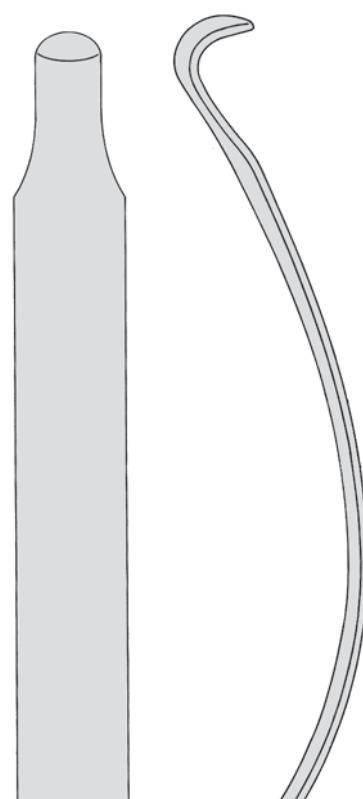


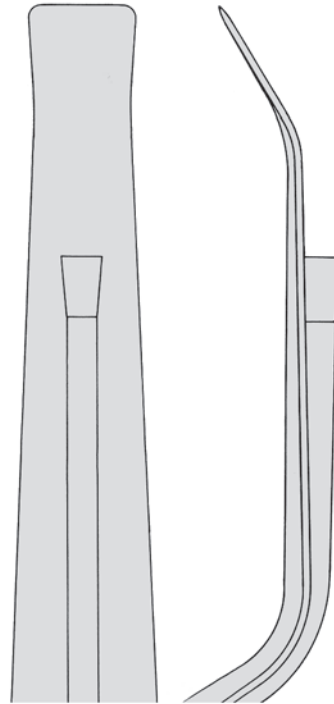
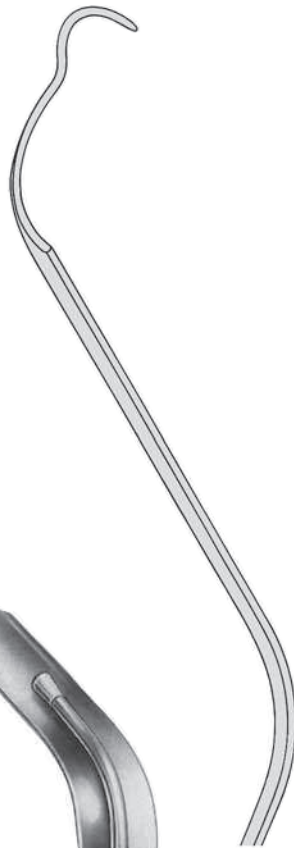
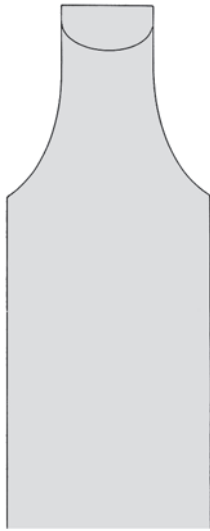


EXTRA ORAL
34.4210
24 cm
9,5 / 16 mm



EXTRA ORAL
34.4215
24 cm
9,5 / 16 mm
mit Kaltlichtaufsatz
with F.O. illumination
avec support lumière froide
con portador de luz fria
con illuminazione alogena





34.4250
19cm/10mm



34.4252
19cm/20mm



34.4255
17,5cm/10mm



LeVASSEUR-MERRILL
34.4260 25 cm
 12,5 / 27 mm



LeVASSEUR-MERRILL
34.4265 25 cm, 12,5 / 27 mm
 mit Kaltlichtaufsatz
 with F.O. illumination
 avec support lumière froide
 con portador de luz fria
 con illuminazione alogena

Mehrweckhaken
 Mult-purpose Retractor
 Ecarteur à usage universelle
 Separador de aplicaciones varias
 Separatore multiuso



SHEA
34.4275 24 cm, 14,5 mm
 mit Kaltlichtaufsatz
 with F.O. illumination
 avec support lumière froide
 con portador de luz fria
 con illuminazione alogena



DINGMANN
 Zygoma-Haken
 Zygoma Hooks
 Ecarteur zygomatiques
 Ganchos zigomáticos
 Divaricatori per zigoma



SELDIN
34.4300 #23
 19,5 cm



GILLIES
34.4310 21 cm



DINGMAN
34.4320 21 cm



DINGMAN
34.4325 18 cm

Kronendrucker
 Band Pusher
 Adapteur de couronnes
 Empujador de coronas
 Preminastro



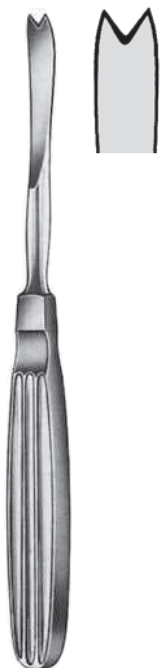
MERSHON
34.4390 14,5 cm



OBWEGESER-FREER
34.4561 21 cm



OBWEGESER-FREER
34.4563 21 cm



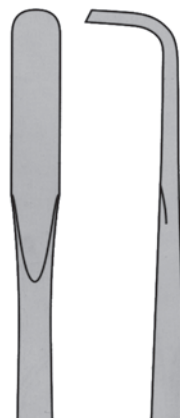
OBWEGESER
34.4570 17,5 cm



TESSIER
18 cm



34.4501
6 mm
30°



34.4503
6 mm
60°



OBWEGESER
17,5 cm



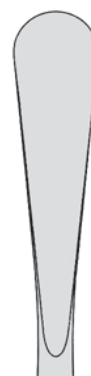
34.4506
6 mm



34.4507
7 mm



34.4509
9 mm



34.4511
11 mm





OBWEGESER
 20 cm



34.4525
 5 mm



34.4527
 7 mm



34.4529
 9 mm

Gaumenspatelraspatorien
 Cleft-Palate Raspatories
 Raspatoires du palais
 Legras para paladar
 Periostotomi p.fessura del palato

rechts
 right
 droite
 derecha
 destra

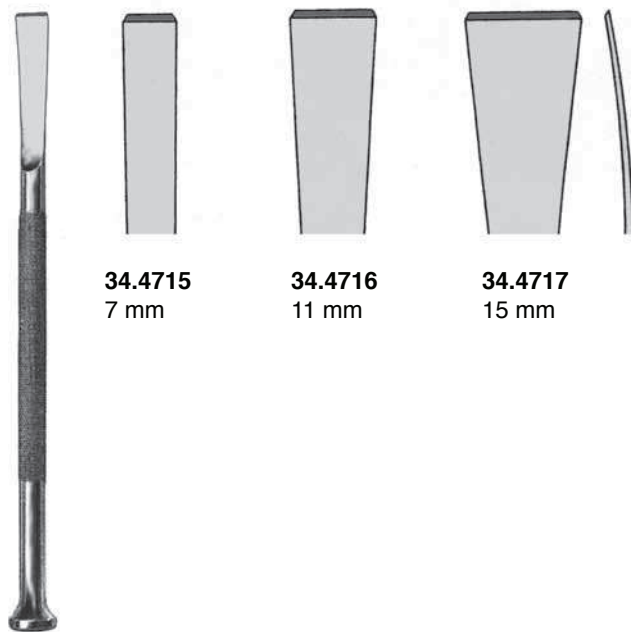


34.4540
 14 cm



34.4542
 14 cm

links
 left
 gauche
 izquierda
 sinistra

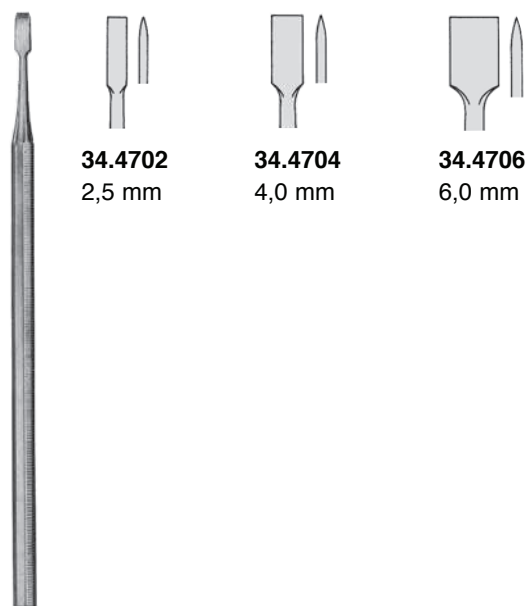


34.4715
7 mm

34.4716
11 mm

34.4717
15 mm

STEINHÄUSER
19 cm

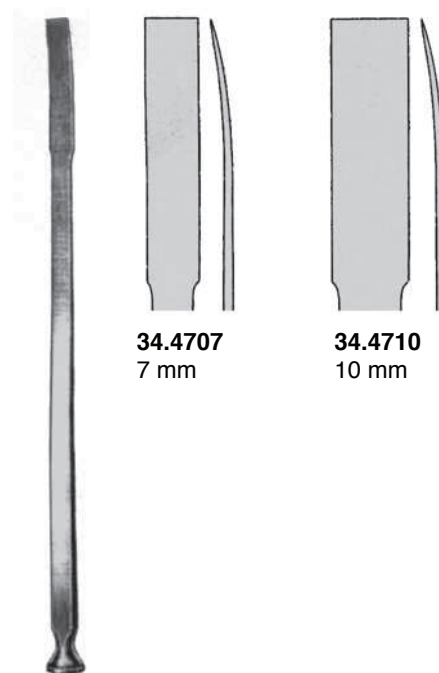


34.4702
2,5 mm

34.4704
4,0 mm

34.4706
6,0 mm

OSTEOTOM
15 cm



34.4707
7 mm

34.4710
10 mm

STEINHÄUSER
17 cm



OBWEGESER
 34.4730 18,5 cm



OBWEGESER
 34.4743 18,5 cm



OBWEGESER
 34.4750 23,5 cm



TESSIER
 20 cm / 10 mm



34.4760



34.4761



OBWEGESER
 34.4770
 21 cm / 7 mm



OBWEGESER
 34.4772
 21 cm / 10 mm



OBWEGESER
 34.5000 14 cm



KELSEY-FRY
 34.5010 15 cm



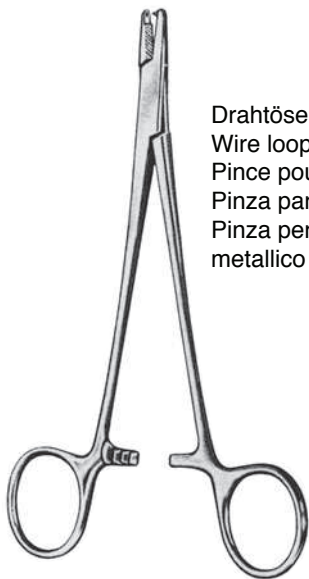
KELSEY-FRY
 34.5012 18 cm



34.5020
 18 cm



OBWEGESER
 34.5030 23 cm



Drahtösenzange
 Wire loop forceps
 Pince pour anses
 Pinza para ases
 Pinza per ochiello in filo
 metallico

OBWEGESER
 34.5100 15 cm

Cerclagedraht
 Bone wire
 Fil d'acier
 Hilo para huesos
 Filo per ossa



23.4004 10 m / 0,4 mm
23.4005 10 m / 0,5 mm



23.4135 14,5 cm



ZIEGLER
23.4170 18 cm



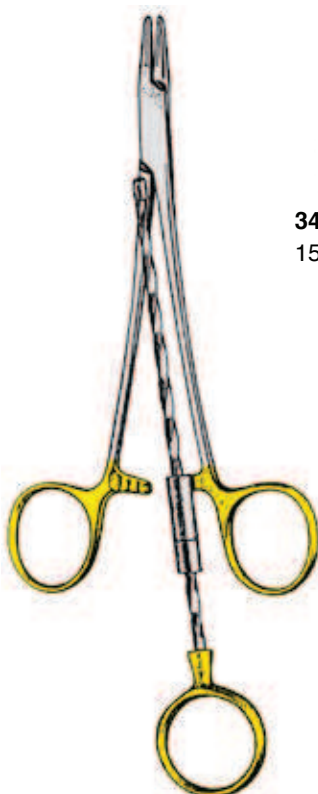
MAYO-HABERISSER
Drahtwirbelzangen
Wire twisting forceps
Pinces serre-fil
Pinzas-tensoras de alambre
Pinzas tendifili d'acciaio



23.4220
15 cm



23.4221
15 cm



34.5120
15 cm



34.5122
15 cm



34.5124
15 cm



34.5126
18 cm



links
left
à gauche
a izquierda
sinistra

TESSIER
34.5200
15 cm



rechts
right
à droite
a derecha
destra

TESSIER
34.5202
15 cm

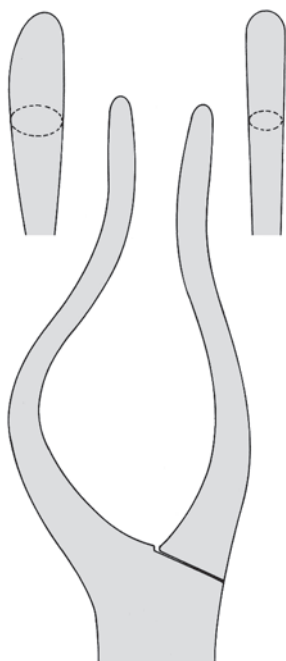
PRO-MED ist Ihnen behilflich bei der Zusammenstellung von Operationsbestecken für die verschiedensten Disziplinen. Fragen Sie nach unseren vorbereiteten OP-Bestecken.

For your convenience a wide variety of Suggested Operating Sets for most general and specialized procedures is available from **PRO-MED**. Please contact us or your local dealer.

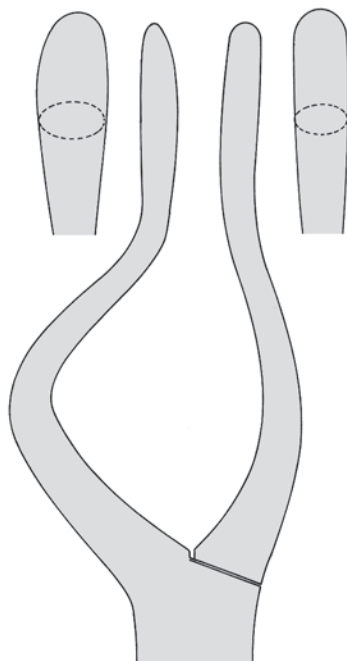
PRO-MED vous propose de multiples compositions de boîtes opératoires multidisciplinaires. Demandez nos suggestions pour de nombreuses interventions.

PRO-MED le ayuda en componer varias cajas de instrumentos quirúrgicos. Pregunte por nuestro instrumental quirúrgico preparado.

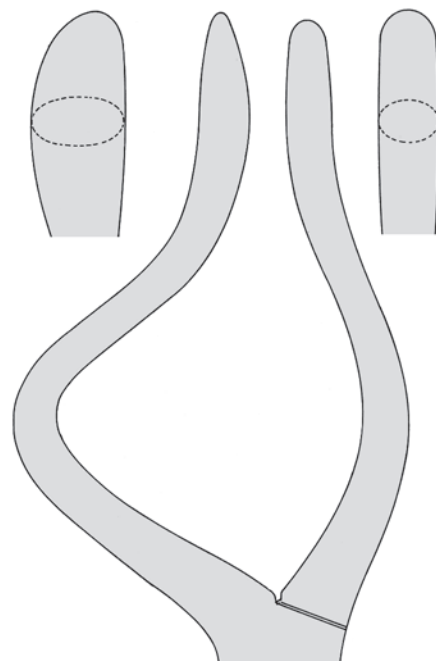
Per la vostra comodità **PRO-MED** Vi aiuta nella raccolta di strumenti chirurgici per le varie discipline. Vi preghiamo di chiedere informazioni sui nostri set di strumenti chirurgici già preparati.



34.5300L
34.5310R
 für Säuglinge / Kleinkinder
 for babies
 pour nourissons
 para lactantes
 per lattanti



34.5302L
34.5312R
 für Kinder / Jugendliche
 for children / juveniles
 pour enfants / juvéniles
 para niños / menors
 per bambini



34.5304L
34.5314R
 für Erwachsene
 for adults
 pour adultes
 para adultos
 per adulti



Links
 left
 à gauche
 a izquierda
 sinistra

ROWE
 34.5300 - 34.5304



Rechts
 right
 à droite
 a derecha
 destra

ROWE
 34.5310 - 34.5314